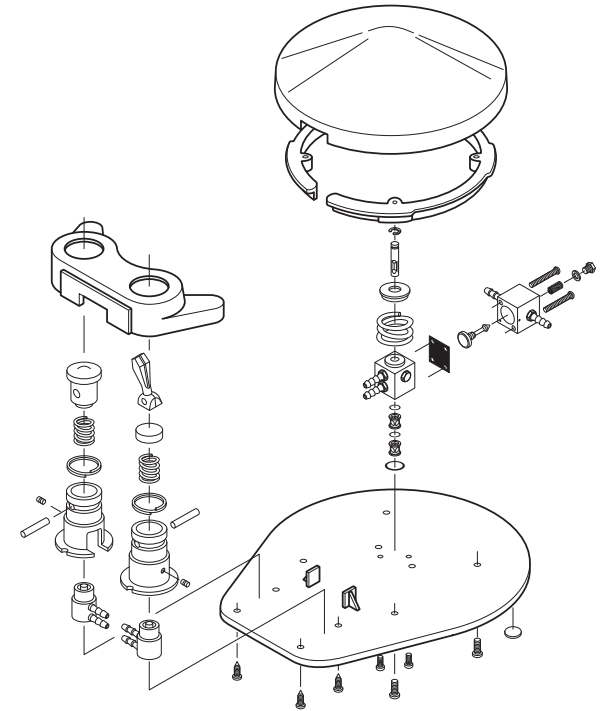


**FOOT CONTROL REPAIR
KIT, PN 6161**
Installation Instructions



8. Press the large O-Ring (PN 2210) into the cutout in the bottom of the valve body.
9. Reattach the valve body to the base plate with the two 3/32" hex screws.
10. Apply a small amount of silicone lubricant to the valve stem and slide it through the ring return and down into the large compression spring. The E-Clip on the stem should rest on top of the ring return. Slide assembly into hole on block.
11. Position the large compression spring (PN 6042) over the stem and ring return. Position the foot control disc over the base plate; make sure the large compression spring is located in the center of the foot control disc.
12. Turn the foot control over while holding the disc and the large compression spring in place. Reattach the disc using the four Phillips head screws. It may be necessary to move the plastic retaining ring around in order to find the holes.
13. Your FC is now ready for use.



FOOT CONTROL REPAIR KIT, PN 6161 INSTALLATION INSTRUCTION

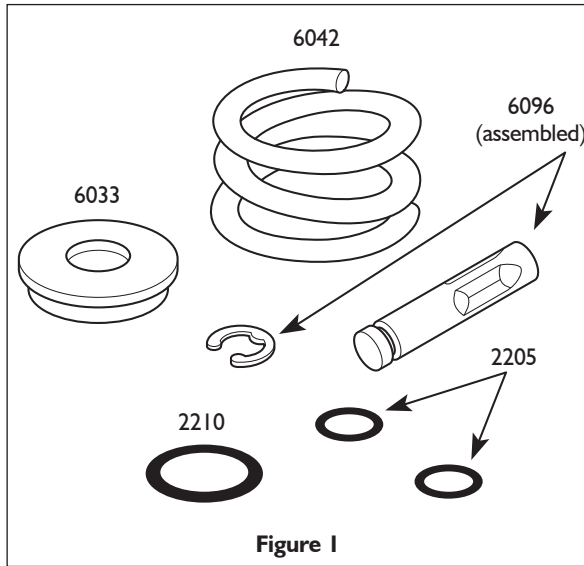
This foot control repair kit contains all of the parts needed to rebuild the valve body in any one of the following foot controls:

- 6300, 6303, 6309, and 6326 Standard FCs
- 6301, 6304, 6313, and 6327 Economy FCs

This kit includes:

- One compression spring PN 6042
- Two small O-Rings PN 2205
- One large O-Ring PN 2210
- One valve stem, with E-Clip PN 6096
- One return ring PN 6033

These parts are identified in Figure 1 below:



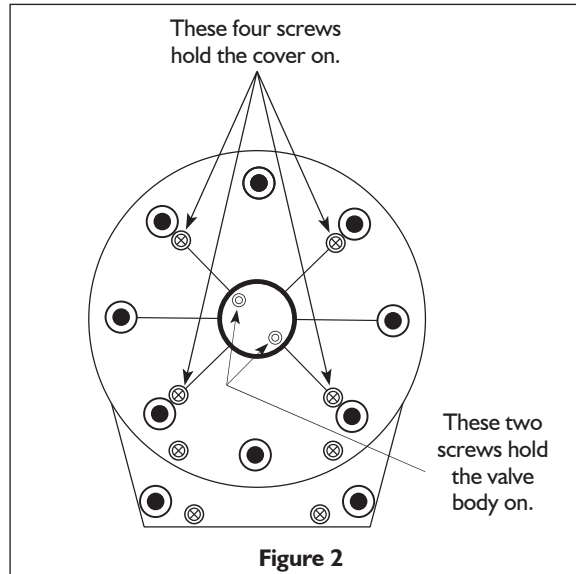
To install this kit, you will need:

- Phillips head screwdriver
- 3/32" hex wrench
- A pointed instrument, such as a dental pick.

Caution: Be sure air supply to FC is off before proceeding.

FOOT CONTROL REPAIR KIT, PN 6161 INSTALLATION INSTRUCTION

1. Remove the foot control disc. On the bottom of the foot control, locate and remove the four Phillips head screws shown in Figure 2.
2. Turn the foot control right side up while holding the disc on. Lift the disc off, exposing the valve body. Leave the plastic retaining ring in the disc.
3. Lift the large compression spring off the top of the valve body. Pull the stem out of the hole in the top of the body. Lift the smaller conical spring off the top of the valve body (see Figure 3).



4. Turn the foot control over again and remove the two 3/32" hex screws near the center of the base plate (shown in Figure 2).

CAUTION

When using a sharp instrument in the following steps, use care not to scratch the finished metal surfaces on the valve body. These surfaces must be smooth in order for the O-Rings in the valve body to seal properly.

FOOT CONTROL REPAIR KIT, PN 6161 INSTALLATION INSTRUCTION

5. Lift the valve body off of the base plate and turn it over. The large O-Ring will be visible in the bottom of the body. Use a dental pick or other sharp instrument to pull the O-Ring out. Using the dental pick, reach into the hole in the bottom of the valve body and pull out the two O-Rings and the two spools shown in Figure 3. **Be careful not to scratch the inner surfaces of the valve body with your dental pick.**
6. Apply a light coating of all purpose silicone lubricant (DCI part number 8032) to all three of the replacement O-Rings.
7. Press the two small O-Rings (PN 2205) into the bore, along with the spools, in the order shown in Figure 3.

